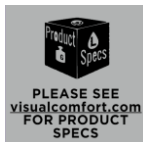
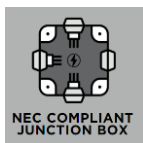
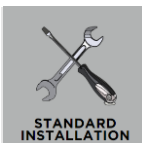
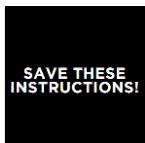


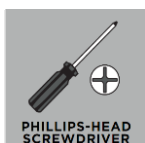
AZER MEDIUM & LARGE PICTURE LIGHTS

EW1212; EW1222

General Product Information



Tools Required/Suggested



Safety Information

CAUTION-RISK OF FIRE

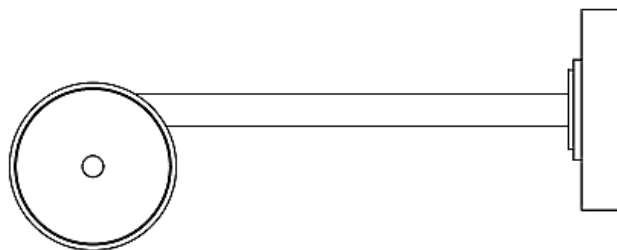
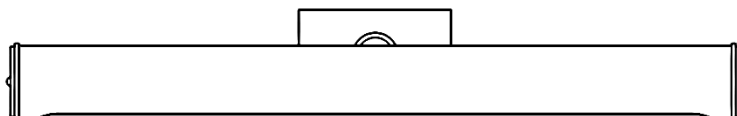
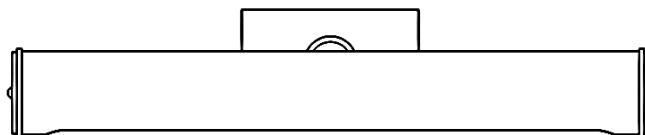
This product must be installed in accordance with the applicable installation code by a person familiar with the construction and operation of the product and the hazards involved.

USE MINIMUM 90°C SUPPLY CONDUCTORS.



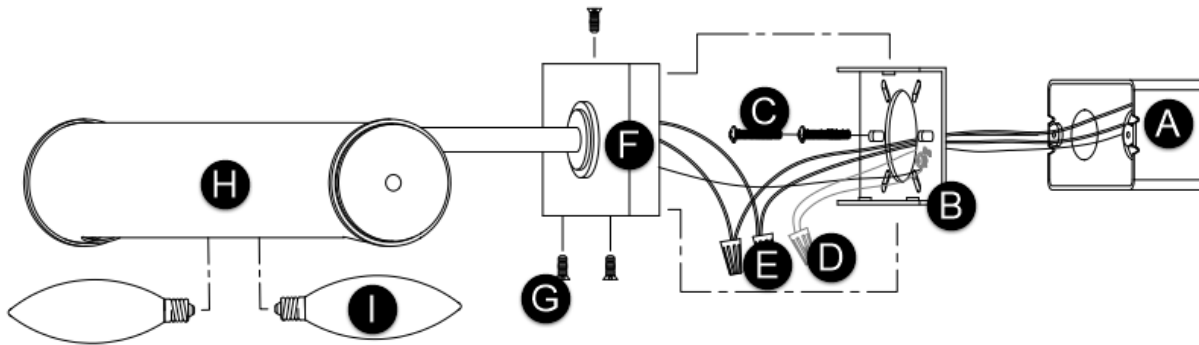
Turn off electrical current at the source before working with any lighting fixture or portable lamp.

Install and use this product in adherence with local electrical codes and regulations.



FIXTURE PARTS

- A. Junction box
- B. Mounting Plate
- C. Mounting Screws
- D. Ground Wire
- E. Fixture Wires
- F. Fixture Base
- G. Fixture Screws
- H. Fixture
- I. Bulbs



INSTRUCTIONS

I. Preparing the Fixture

1. Separate the mounting plate from the fixture base.
2. Secure the mounting plate to the junction box with the mounting screws.

II. Wiring the Fixture

1. Safety first! Locate the circuit breaker and switch it off to cut off the power supply to the relevant circuits to ensure there's no electricity running through the wiring.
2. In accordance with local electrical codes, connect the fixture ground wire (bare copper or silver wire) to suitable ground. This may be a green ground screw on the mounting plate or a house wire (green or bare copper wire without insulation).
3. Twist the bare ends of the following pairs of wires together using a wire nut to secure a connection:
 - a) Hot fixture wire to hot power line wire
 - b) Neutral fixture wire to neutral power line wire
4. Carefully tuck all the wires and wire-nut connections into the junction box.

III. Installing the Fixture

1. Mount the fixture base onto the mounting plate and secure it in place by installing the fixture screws.
2. Screw the bulbs into the sockets. Refer to the socket label for max wattage information.